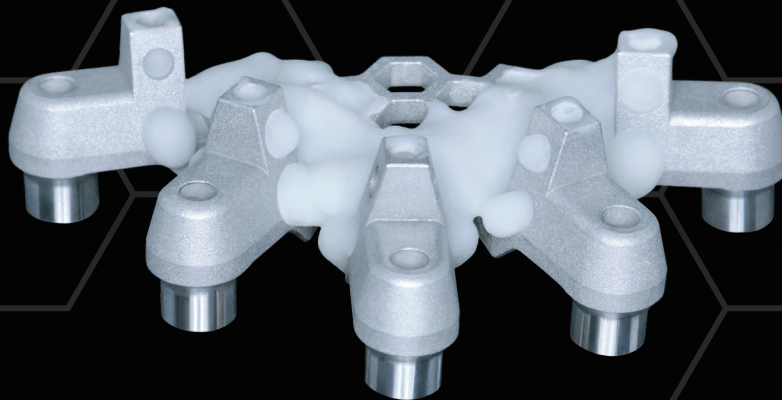


# OPTISPLINT® CLINICAL WORKFLOW

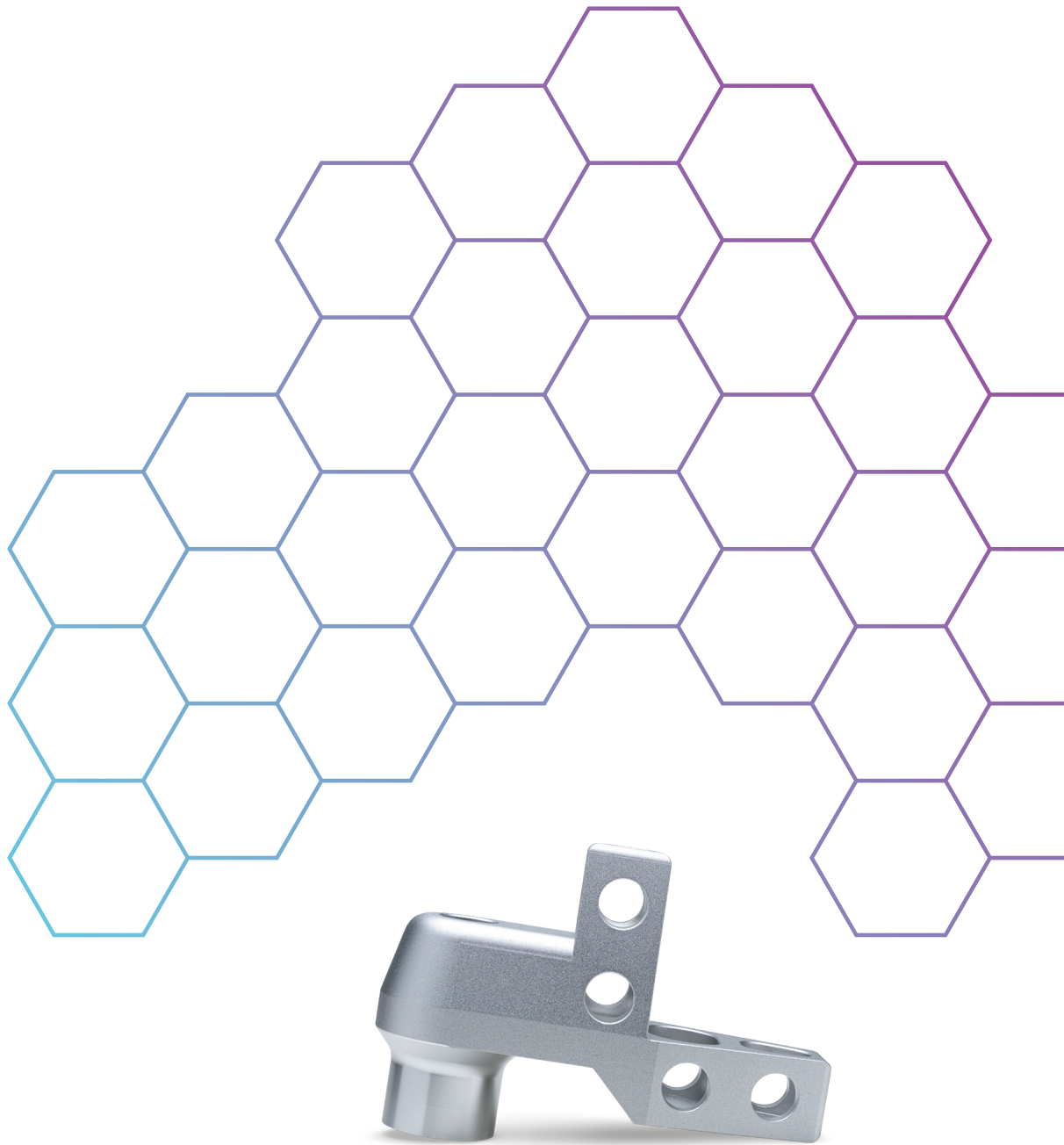
SURGICAL

 **PTISPLINT**  
by DIGITAL ARCHES



**BruxZir®**  
*esthetic*  
FULL-ARCH IMPLANT PROSTHESIS



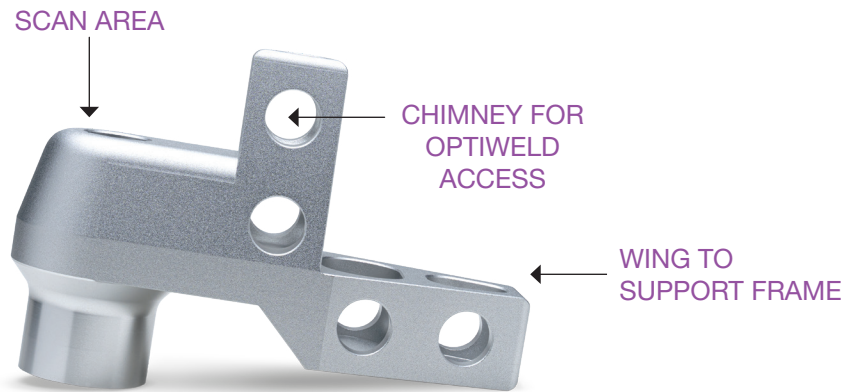


# Digital Workflow for Full-Arch Prosthesis

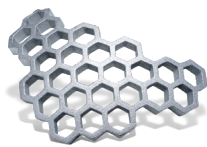
Glidewell is proud to partner with Digital Arches to offer OPTISPLINT® to restore full-arch implants **predictably** and **efficiently**.

For BruxZir® Full-Arch Implant Restorations that include ti-bases, **Glidewell recommends the OPTISPLINT workflow.**

# GETTING TO KNOW OPTISPLINT®



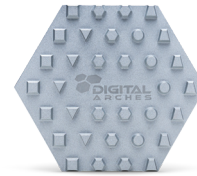
**OPTISPLINT SCAN BODY**



**FRAME**



**OPTIWELD™**



**SCANPLATE™**

## SCANS NEEDED AT EACH WORKFLOW STAGE

Scans are needed throughout the restorative process.



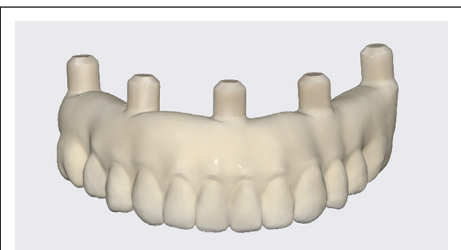
### STAGE 0: PRE-SURGICAL

- CBCT
  - Dual scan (Fully or partially edentulous cases)
- Intraoral scan (upper/lower)
- Intraoral scan (bite: desired VDO)
- Facial photos or scans



### STAGE 1: SURGICAL

- Prior to Teeth Extraction**
- Fiducial marker scan
  - Intraoral scan (upper/lower)
  - Intraoral scan (bite: desired VDO)
- After Implant Placement**
- Tissue scan with fiducial marker (ARCHTRACER™) and Multiunit SCANCAPS
  - Implant scan: luted OPTISPLINT on SCANPLATE



### STAGE 2: RESTORATIVE

- Facial photos or scans
- Intraoral scan (seated prosthesis)
- Intraoral scan (opposing)
- Intraoral scan (bite: desired VDO)
- Tissue scan with Multiunit SCANCAPS
- Implant scan (luted OPTISPLINT on SCANPLATE)
- Extraoral 360° scan of prosthesis with OPTISPLINT scan analogs

## STAGE 0: PRE-SURGICAL PHASE

The following records are essential for treatment planning full-arch restorations. These records enable the initial design of a prosthesis to align with day-of-surgery scans to fabricate an immediate prosthesis.

### Pre-Surgical Records Needed

- CBCT scans  
(Dual scan for fully or partially edentulous cases)
- Intraoral scan (upper/lower)
- Intraoral scan (bite: desired VDO)
- Facial photos or scans



Begin case in *My Account*. Indicate day of surgery, type of prosthesis (FP1, FP2, FP3), and upload scans. Glidewell will prepare initial design to be finalized on day of surgery.

## STAGE 1: SURGICAL PHASE

**THE OUTCOME OF THIS PHASE IS A TEMPORARY PROSTHESIS.**

### STAGE 1 SCANS NEEDED

The following scans should be acquired on the day of surgery after fiducial marker is placed.

#### Prior to Tissue Extraction

- Fiducial marker scan: intraoral scan with ARCHTRACER
- Fiducial marker in place
- Intraoral scan (upper/lower)
- Intraoral scan (bite: desired VDO)

#### After Implant Placement

- Tissue scan: fiducial marker (ARCHTRACER) and Multiunit SCANCAPS
- Implant scan: luted OPTISPLINT on SCANPLATE

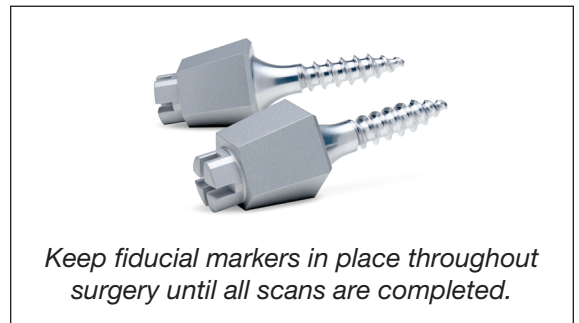
### SURGICAL WORKFLOW

#### 1 Place Fiducial Markers and Scan

Place fiducial marker (e.g. ARCHTRACER, foundation guide). Take a full-arch scan with intraoral scanner capturing soft tissue and fiducial marker(s).

#### DENTATE CASES:

*Keep pre-selected teeth as additional markers if teeth are present in the pre-surgical records.*

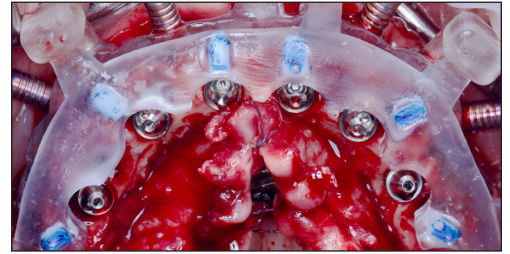


*Keep fiducial markers in place throughout surgery until all scans are completed.*

**Receive confirmation from Glidewell Lab team that all scans were received and aligned with STAGE 0 pre-surgical scans before proceeding with surgery.**

## 2 Implant Surgery

Using preferred surgical method, extract desired teeth and place implants. Secure MUAs to each implant.



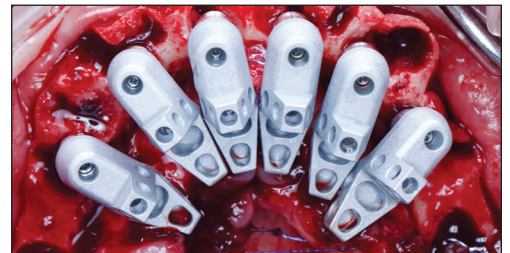
## 3 Assemble OPTISPLINT and Lute

Place screws in the OPTISPLINT Scan Body.

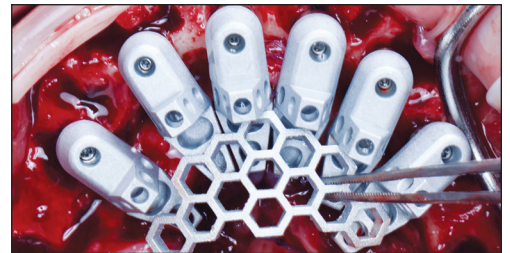


With fiducial marker still in place, secure an OPTISPLINT Scan Body on each MUA.

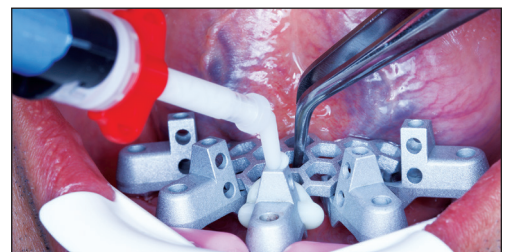
Align the OPTISPLINT wings so that they point toward each other. Lightly hand tighten.



Choose the frame that best reaches all the scan body wings. You may trim the OPTISPLINT Frame, if needed, with provided frame clippers. Rotate the scan bodies as needed to support the frame. Finish hand tightening screws.

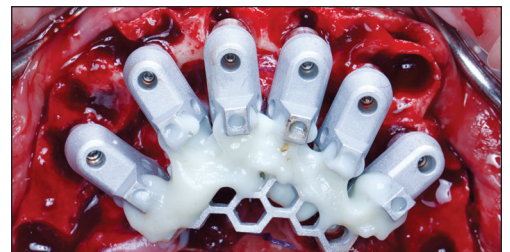


Load OPTIWELD(ER)<sup>™</sup> Mixing Gun with the OPTIWELD Dual-Cure Composite cartridge and attach the dispensing tip with the small channel delivery component so that you can flow material onto the OPTISPLINT Frame and down through chimneys.



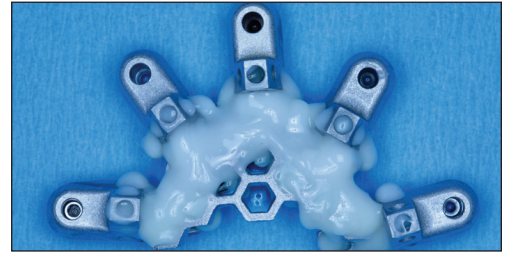
Working one scan body at a time, flow material through chimney and onto wing and frame. Cure with light, then move to next scan body. Ensure frame is luted securely to all scan bodies.

Make sure you do not get material on the actual scan portion of the sandblasted scan body.



#### 4 Remove OPTISPLINT

Once each scan body has been locked to the frame, unscrew and remove.

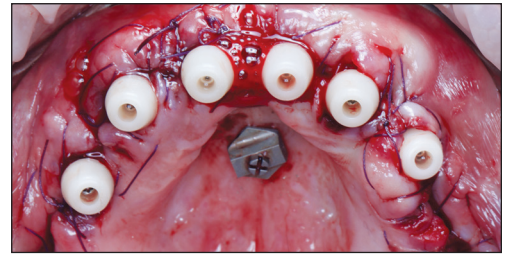


#### 5 Tissue Scan

If applicable, remove foundation/bone reduction guide (keep ARCHTRACER in place).

Seat scancaps onto each MUA. Suture and scan using intraoral scanner.

NOTE: Multiunit SCANCAPS utilize the same screws you used with the OPTISPLINT scan bodies. Attach scancaps prior to suturing.



#### 6 Extraoral Scans

Place OPTISPLINT on SCANPLATE and scan.

Place OPTISPLINT assembly in enclosed retainer box. Keep in office for restorative phase.



#### 7 Send Scans to Glidewell to Fabricate Immediate Provisional



Once Glidewell confirms scans are received, the fiducial markers can be removed.

Glidewell finalizes the design by merging the three surgical day scans with the pre-surgical planning design to finalize the temporary prosthesis with two options:



**Same-Day Delivery:** Receive STL file for in-office printing or milling.

**Next-Day Delivery:** Glidewell overnights temporary (printed or milled) for next-day delivery.

## STAGE 2 : RESTORATIVE PHASE

### THE OUTCOME OF THIS PHASE IS A FIXED TRY-IN PROSTHESIS.

#### STAGE 2 SCANS NEEDED

The following scans should be acquired in the Restorative Phase. Updated scans are required, even if scans were acquired in surgical phase.

- Facial photos or scans
- Intraoral scan (seated prosthesis with surrounding tissue)
- Intraoral scan (opposing arch)
- Intraoral scan (bite: desired VDO)
- Tissue scan with Multiunit SCANCAPS in place
- Extraoral 360 scan of temporary prosthesis with analog scancaps
- Implant scan: luted OPTISPLINT on SCANPLATE

**NOTE:** After scans are complete, the physical OPTISPLINT will be sent to Glidewell for final prosthesis fabrication.

#### RESTORATIVE WORKFLOW

**NOTE:** Ensure all MUAs are torqued to manufacturer's recommendation prior to seating the OPTISPLINT scan bodies.

##### 1 Confirm Bite, Adjust as Needed

Remove temporary prosthesis after any needed adjustments.



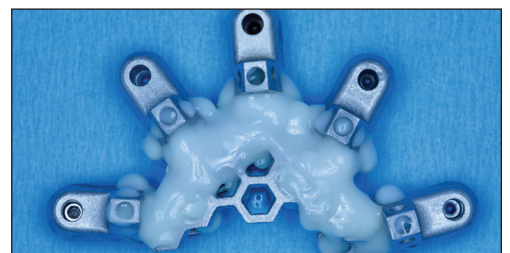
##### 2 Try in OPTISPLINT

If the fit is not passive, section the OPTISPLINT, secure each section to the MUAs and re-lute.



##### 3 Remove OPTISPLINT

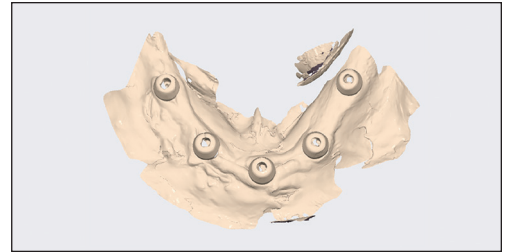
Once each scan body has been locked to the frame, unscrew and remove.



#### 4 Tissue Scan

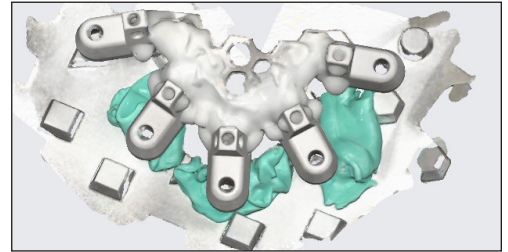
Seat Multiunit SCANCAPS onto each MUA and scan using intraoral scanner.

*NOTE: Multiunit SCANCAPS utilize the same screws you used with the OPTISPLINT scan bodies.*



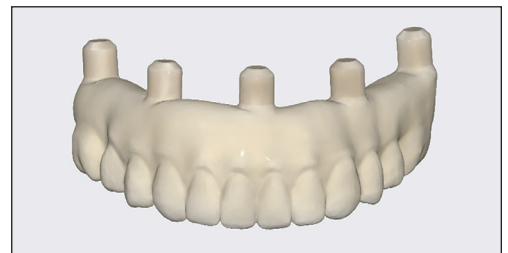
#### 5 Implant Scan (Luted OPTISPLINT on SCANPLATE)

Place OPTISPLINT on SCANPLATE and scan with intraoral scanner.



#### 6 Extraoral 360° Scan of Temporary Prosthesis

Press analog scancaps into the intaglio side of the temporary prosthesis and scan.



## FINAL STAGE

#### 1 Send OPTISPLINT to Glidewell

When a try-in is approved, send final scans and OPTISPLINT to Glidewell with the second set of analog scancaps for Glidewell to mill a final prosthesis.



**BruxZir®**  
*esthetic*  
FULL-ARCH IMPLANT PROSTHESIS

Lifetime Warranty and No-Fault Remake  
**GUARANTEED!**

 **Glidewell**  
*for the sake of smiles*